

Specsheet

Prowise Touchscreen Ten G3



The Prowise Touchscreen Ten G3 combines excellent user experience and specifications. All feedback from teachers and IT professionals comes together in the Prowise Touchscreen Ten G3. From writing experience to software tools and from management to security. This spec sheet introduces you to all the highlights and, of course, you can also browse through all the specs in the overview.

On the Prowise Touchscreen Ten G3 you freely use our education software Prowise Presenter and the Mobile Device Management software package Prowise Screen Control to centrally manage your Prowise touchscreens remotely. The development of Prowise Presenter and Prowise Screen Control has been certified by the BSI, the global authority in the field of cyber security.

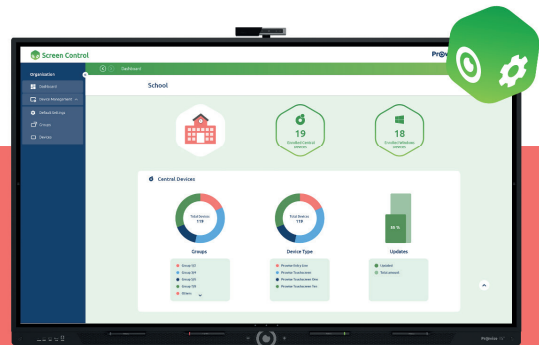
"So far, Prowise has been the only manufacturer of educational software that has received such a certification."

Source: www.bsi.bund.de



Education software Prowise Presenter

- ✓ Writing, erasing, typing
- ✓ Wallpapers, images, videos, 3D
- ✓ Interaction with devices
- ✓ Hundreds of educational practise tools
- ✓ Quiz module



MDM software Prowise Screen Control

- ✓ Pushing apps
- ✓ Installing updates
- ✓ Switching on and off remotely
- ✓ Safety settings
- ✓ Specially developed for Touchscreens

Breathtaking image and sound quality

Enjoy the incredible 4K visual experience and room-filling audio.

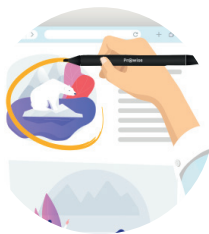
- ✓ 4K/Ultra HD IPS
- ✓ 178° viewing angle
- ✓ Zero Bondend Anti-Glare Pro
- ✓ Anti bacterial etched nano-texture glass
- ✓ 2.1 Audio Soundbar
- ✓ 6x wide-area microphones



Excellent writing experience

Pen to paper, smooth and precise

- ✓ 4 pens
- ✓ Pens write simultaneously in 3 different colors
- ✓ Palm recognition
- ✓ Windows Ink compatible
- ✓ 40 touchpoints
- ✓ Prowrite infrared Technology
- ✓ Pen pick-up recognition



Annotate

Take notes on any website, PDF or input source.



Pick-up recognition

Grab a pen and you can directly open the writing software.



Palm recognition

Rest your palm on the screen while writing.

Effortless connection

Integrated USB-C ports

All the benefits of USB-C

Thanks to the USB-C ports, your Prowise touchscreen has a built-in docking station. You only need one cable for: Audio, Data, Video, Charging, Touch, Internet

- ✓ Powersupply (100W and 15W)
- ✓ Supported standards:
 - USB 3.2 gen 1
 - USB Touch
 - Displayport 1.2
- ✓ Internet (100 Mb/s)

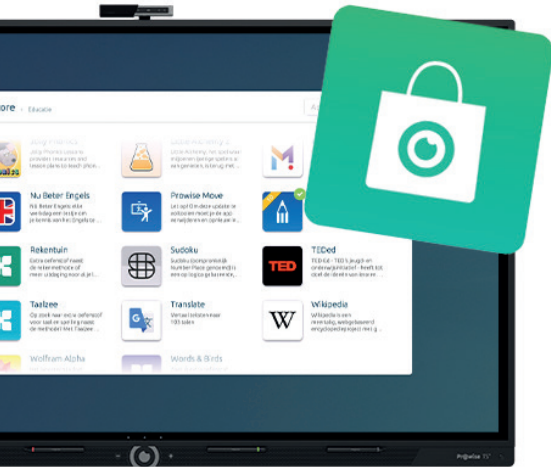
Wireless

Screencasting

Share the screen from any device on the Prowise Touchscreen, even with several devices at once or mixed together. Fully wireless, in excellent quality, fast, secure by pin code, no additional costs or complicated installations.

- ✓ AirPlay - 4 in the mix
- ✓ Chromecast - 4 in the mix
- ✓ Reflect - 10 at a time with touchback function
- ✓ Miracast

Educational apps and tools



Indispensable apps

- ✓ Microsoft Teams
- ✓ Google Meet
- ✓ Skype
- ✓ Zoom
- ✓ Netflix
- ✓ Spotify
- ✓ Youtube

Classroom favorites

- ✓ Birthday cake
- ✓ Memory
- ✓ Mind map
- ✓ Flashcards
- ✓ Bus sums
- ✓ Line of numbers
- ✓ Group creator
- ✓ Name picker

Performance & Stability

Faster and more memory than ever

- ✓ Android 13.0
- ✓ Storage 64GB
- ✓ Memory 8GB

Wifi 6

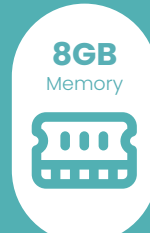
- ✓ 250% faster than Wi-Fi 5
- ✓ No separate module
- ✓ Performance and stability



Performance & stability



android



8GB
Memory



64GB
Storage



Wifi
6

Control in the classroom



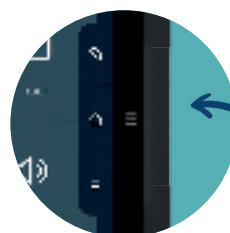
On-glass buttons

You link the three on-glass buttons to an action or programme yourself.



Prowise Magic Remote

With the optional Prowise Magic Remote you can click, point, magnify and spotlight content.



Menu

Quick access to the menu items

Prowise Central, control your digital board without a computer or PC module

Prowise Central includes everything you need to get started with your digital board in the classroom right away. No complicated installation or configuration required.



Work quickly and efficiently



Launch your apps with one click

The Prowise Appstore only displays validated and secure apps, without adverts or inappropriate content.



Access to your files, whenever and wherever

It's easy to log into your Prowise account on your touchscreen, giving you access to all your linked cloud accounts.



Display other screens in the classroom

Via Airplay, Chromecast or Miracast, you can screencast up to 4 screens from pupil devices to your touchscreen at the same time.



Prefer Google's operating system?

Thanks to Prowise's Google EDLA certification, you can choose how to work on your digital board: either with the custom-made Prowise Central operating system, or with the Google-certified Android environment, which includes access to the Google Play Store™.



Google EDLA

You just need to log into your Google account, and all your favorite Google apps are at your disposal. If you work on your personal device with the same account, you'll find your work immediately on the desktop of your Prowise touchscreen.

TouchGREEN

Your Prowise touchscreen.
Our responsibility.



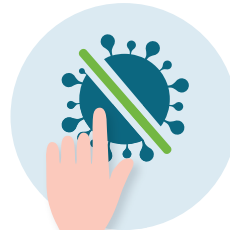
Longer life span

We are so convinced with the lifespan of our screens that we now offer 7 years warranty by default.



You determine the power consumption

Thanks to the three power modes, you can determine the power consumption of your Prowise touchscreen yourself.



Anti-bacterial

The certified antibacterial glass plate kills 99% of the most common bacteria.

Extra options

Prowise MOVE-camera

Distance learning

- ✓ Webcam
- ✓ Teams, Meet, Skype, Zoom
- ✓ 2.1 Soundbar and 6 microphones



Learning through motion with MOVE app

- ✓ Play games without touching the Prowise touchscreen
- ✓ Improves the learning outcomes
- ✓ Is in line with the children's experiences

Prowise PC-module

- ✓ Windows 11 Professional
- ✓ Without external cables
- ✓ Intel vPro Technology (optional)
- ✓ Powerful Intel processor
- ✓ Intel® Iris® XeGraphics
- ✓ Lightning-fast performance



Prowise iPro Liftsystem

- ✓ Ideal height and location
- ✓ Safe and energy efficient
- ✓ Only one cable
- ✓ Patented brake system
- ✓ CE and GS certified
- ✓ Turn the screen into a touch table



Prowise iPro Whiteboard Extension Kit

- ✓ Four-panel whiteboard
- ✓ High-quality protective layer
- ✓ Magnetic
- ✓ Five years Full warranty



Technical specifications

PW.1.17065.0003, PW.1.17075.0003, PW.1.17086.0003

| Display | All screen sizes |
|----------------------------|---|
| Bezel colour | Sandblasted aluminium (black) |
| Dimensions | 65, 75 en 86 inch |
| Panel type | Ultra HD LCD – IPS |
| Resolution | 3840 x 2160 @ 60 Hz |
| Glass panel | Anti-reflection Nano etched technology with antibacterial |
| Display bonding technology | Zero bonded technology |
| Hardness glass | Mohs 7 (9H) |
| Aspect ratio | 16:9 |
| Contrast ratio | 1200:1 (typ.) |
| Dynamic contrast ratio | 5000:1 |
| Brightness | 450 cd/m2 typ |
| Colour depth | 10 Bit (1.07B) |
| Viewing angle | 178° |
| Lifespan | 50.000 hours |

| Touch-Type | |
|---------------------------------|--|
| Type | Prowrite infrared Technology |
| Multi-Touch | Yes (40 Points) |
| Multi-Color Writing | Yes |
| Touch precisie | 1 mm |
| Auto-Calibration | Yes |
| Resistant to sunlight | Yes |
| Supporting OS | Windows 8.1/10/11 / Linux / Mac OS X / Android |
| Pen-on-paper writing experience | Yes |

| | |
|--------------------|-----------------------------------|
| Touch refresh rate | ≥150Hz |
| Pen dock | Yes, with pen pick-up recognition |

| Sound | |
|------------------------|--------------------------------------|
| Speakers | 2.1 sound (2 speakers + 1 subwoofer) |
| Front Speakers | 2 x 20W |
| Subwoofer | 1 x 20W |
| Total power amplifiers | 95W |

| Microphone | |
|-------------------------------|----------------------|
| Type | Wide-area microfoons |
| Number of microphones | 6 |
| Auto switch (Windows/Central) | Yes |
| Can be switched off | Yes |

| Prowrite infrared Technology | |
|--|-----|
| Number of pens | 4 |
| Writing in multiple colours simultaneously | Yes |
| Writing in multiple thicknesses | Yes |
| Smart object selection | Yes |
| Palm recognition | Yes |

| Prowise Central | |
|-----------------------------|--|
| CPU | High-End (Quad-Core A73 + Quad-Core A53) |
| GPU | High-End (Octa-core Mali G52) |
| Supported operating systems | Prowise Central and Google EDLA |
| Android version | Android 13.0 |

| | |
|-----------------------------------|--------------------------|
| Storage | 64GB (Optional 128GB) |
| Memory | 8GB |
| Over-the-Air Updates (OTA) | Yes (5 years of support) |
| NFC reader/writer | Yes |
| Motion sensors | Yes (2 PIR sensors) |
| Ambient light sensor | Yes |

| Accessories | |
|-----------------------------|--|
| Camera bracket | Yes, with screw |
| Number of pens | 4 passive pens |
| Extra pen points | Yes |
| Remote control | Yes, including Batteries |
| Wi-Fi antennas | 2x |
| NFC Cards | Optional |
| Prowise Magic Remote | Optional with pointer, mouse, magnify and spotlight function |
| Wiper | Optional |
| 100 x 100 Vesa mount | Optional |

| Connections | |
|--------------------------------------|---|
| HDMI Out 2.1 (4K@60Hz) | 1x |
| HDMI 2.1 (CEC, ARC, HDCP 2.3) | 1x |
| HDMI 2.1 (CEC, HDCP 2.3) | 2x |
| USB-C (full function) | 1x supporting the following standards: USB 3.2 gen 1, video (displayport 1.2), audio, touch (USB 2.0), LAN (100Mb/s) and 100W power |
| VGA (1920 x 1080 @60 Hz) | 1x |
| AV In (CVBS) (567i) | 1x (3,5 mm Mini-Jack) |
| Audio In (VGA) | 1x (3,5 mm Mini-Jack) |
| Headphone | 1x (3,5 mm Mini-Jack) |

| | |
|----------------------------|---|
| Microphone In | 1x (3,5 mm Mini-Jack) |
| Analogue Audio Output RCA | 2x RCA female (L+R) |
| Digital audio output SPDIF | 1x TosLink optical |
| RS232 operation | 1x DB9 Male |
| IP232 operation | Yes, via LAN |
| USB-B-Touch (USB 3.0) | 2x |
| USB 2.0 | 1 (Central) |
| USB-A 3.2 Gen 1 | 3x (switchable Central / OPS) |
| LAN Port IN/OUT | 2x (RJ45, 1000 Mb/s) |
| Including Wi-Fi | Yes, integrated Wi-Fi module |
| Wi-Fi Standard | 802.11ax- Wi-Fi 6 |
| Bluetooth Standard | 5.2 |
| Mini SD card reader | 1x Max storage expansion of 128GB (FAT32) |
| PC module port | Yes, 80 pins OPS port |

Connections FRONT

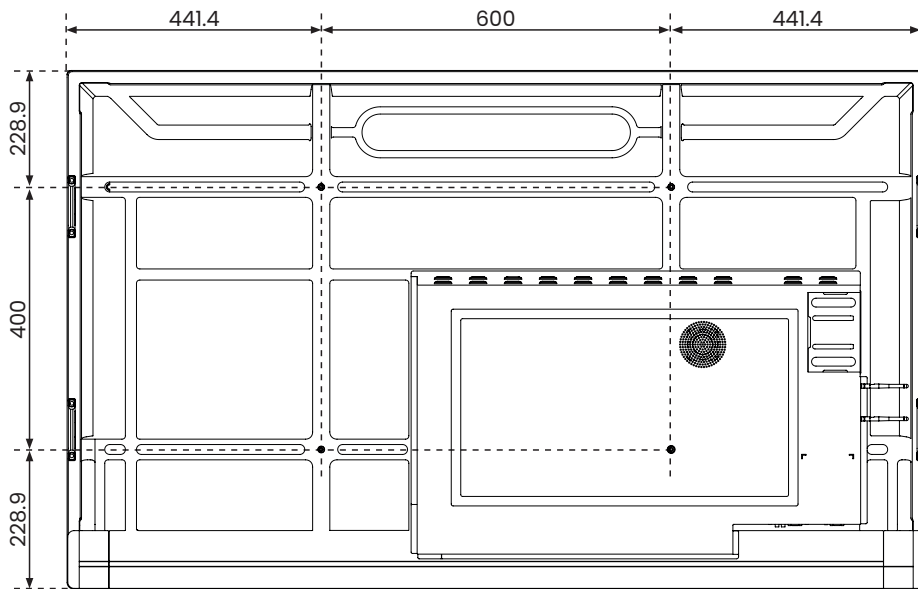
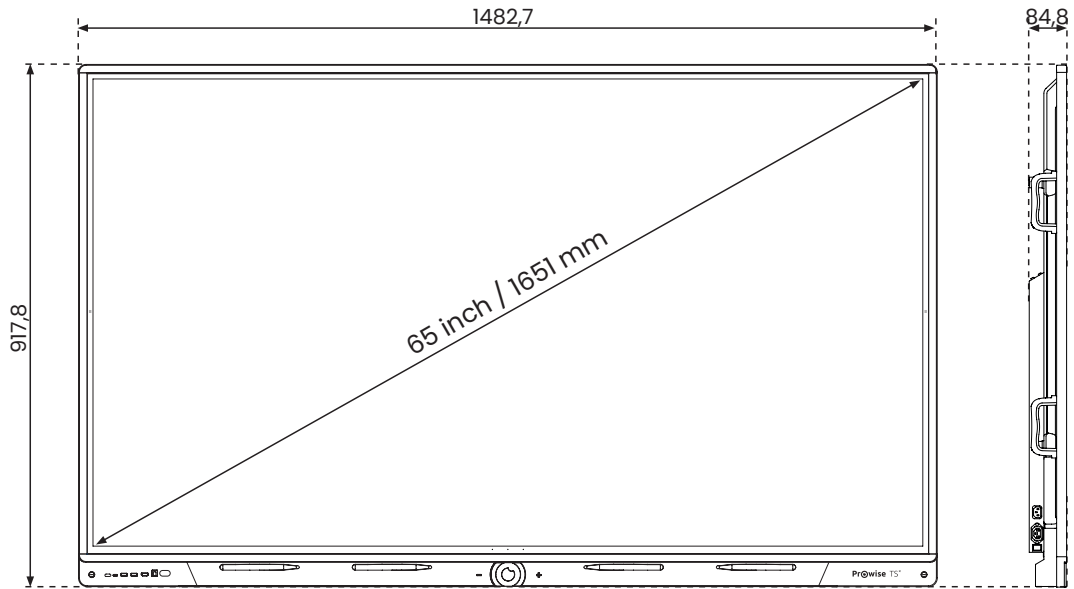
| | |
|--------------------------|--|
| USB-C (full function) | 1x supporting the following standards: USB 3.2 gen 1, video (displayport 1.2), audio, touch (USB 2.0) and 15W power |
| HDMI 2.1 (CEC, HDCP 2.3) | 1x |
| USB-B-TOUCH (USB 3.0) | 1x |
| USB-A 3.2 gen 1 | 2x (switchable Central / OPS) |

| | 65" | 75" | 86" |
|-----------------------------------|-----------------------|---------|---------|
| General Information | | | |
| Power supply | ~ 100-240 V (50/60Hz) | | |
| Energy consumption - Energy saver | 75.7 W | 82.1 W | 118.2 W |
| Energy consumption - Energy Star | 110.7 W | 134.6 W | 170.9 W |
| Energy consumption - Dynamic | 180.8 W | 213.3 W | 273.1 W |

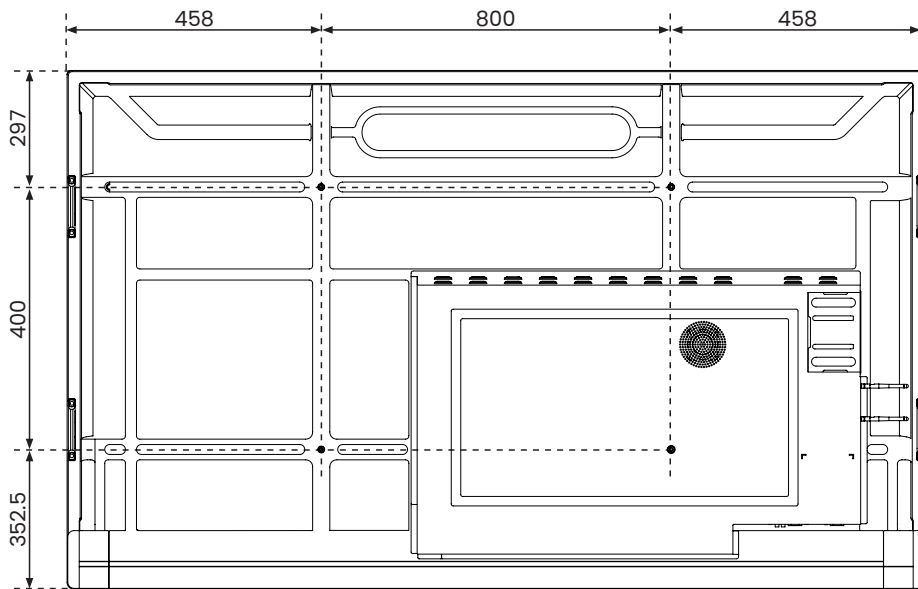
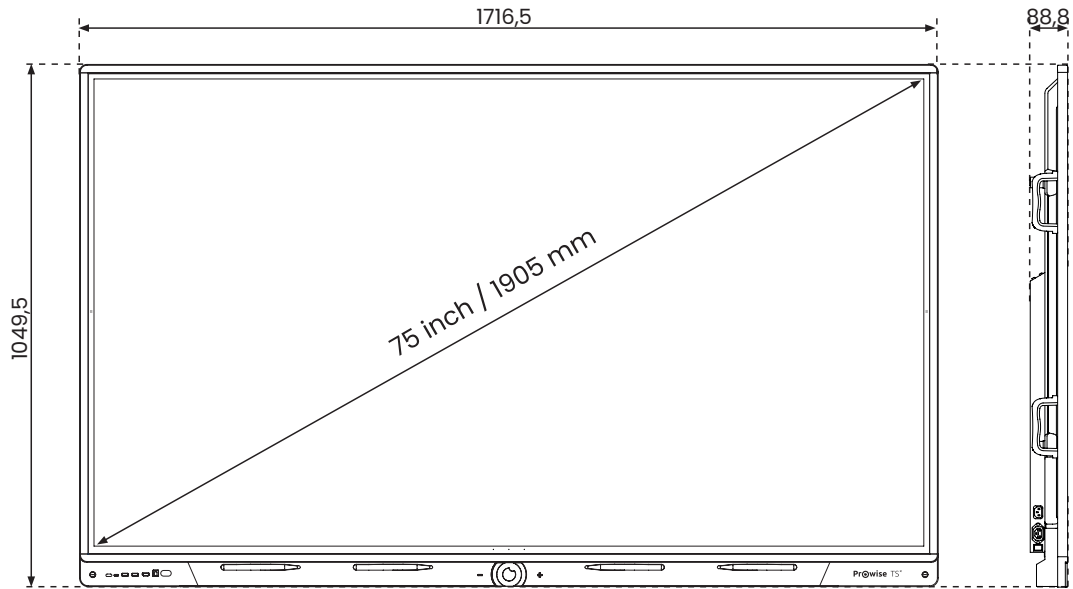
| | | | |
|---|--|---------------------------|---------------------------|
| Stand-by energy consumption | ≤ 0,5 Watt | | |
| Gross weight | 47 KG | 63 KG | 78.5 KG |
| Net weight | 39.5 KG | 54.8 KG | 67.5 KG |
| Screen dimensions (WxHxD) | 1482,7 x 917,8 x 84,8 mm | 1716,5 x 1049,5 x 88,8 mm | 1961,8 x 1189,9 x 86,3 mm |
| Dimensions package (WxDxH) | 1640 x 1010 x 185mm | 1860 x 1125 x 185mm | 2095 x 1265 x 185 mm |
| VESA standard | VESA 600 x 400 mm | VESA 800 x 400 mm | VESA 800 x 600 mm |
| VESA mount for external devices (optional) | VESA 100 x 100 mm | | |
| Bluelight Filter | yes (Low Blue light, Visual Ergonomics Approved & Flicker Free certified by TÜV SÜD) | | |
| Certificats | CE: EMC + LVD / WEEE / RoHS / REACH / FCC-IC / cTUVus/ Ecodesign/ GS / Energy Star | | |
| Warranty | 7 years standard | | |

| Environmental conditions | |
|------------------------------|--------------------------------------|
| Operating temperature | 0 °C up to 38 °C / 32 up to 100 °F |
| Storage temperature | -20 °C up to 60 °C / -4 up to 140 °F |
| Storage Humidity | 10% up to 90% |
| Usage Humidity | 10% up to 90% |

65 inch



75 inch



86 inch

